



# Members Forum 10<sup>th</sup> September 2024

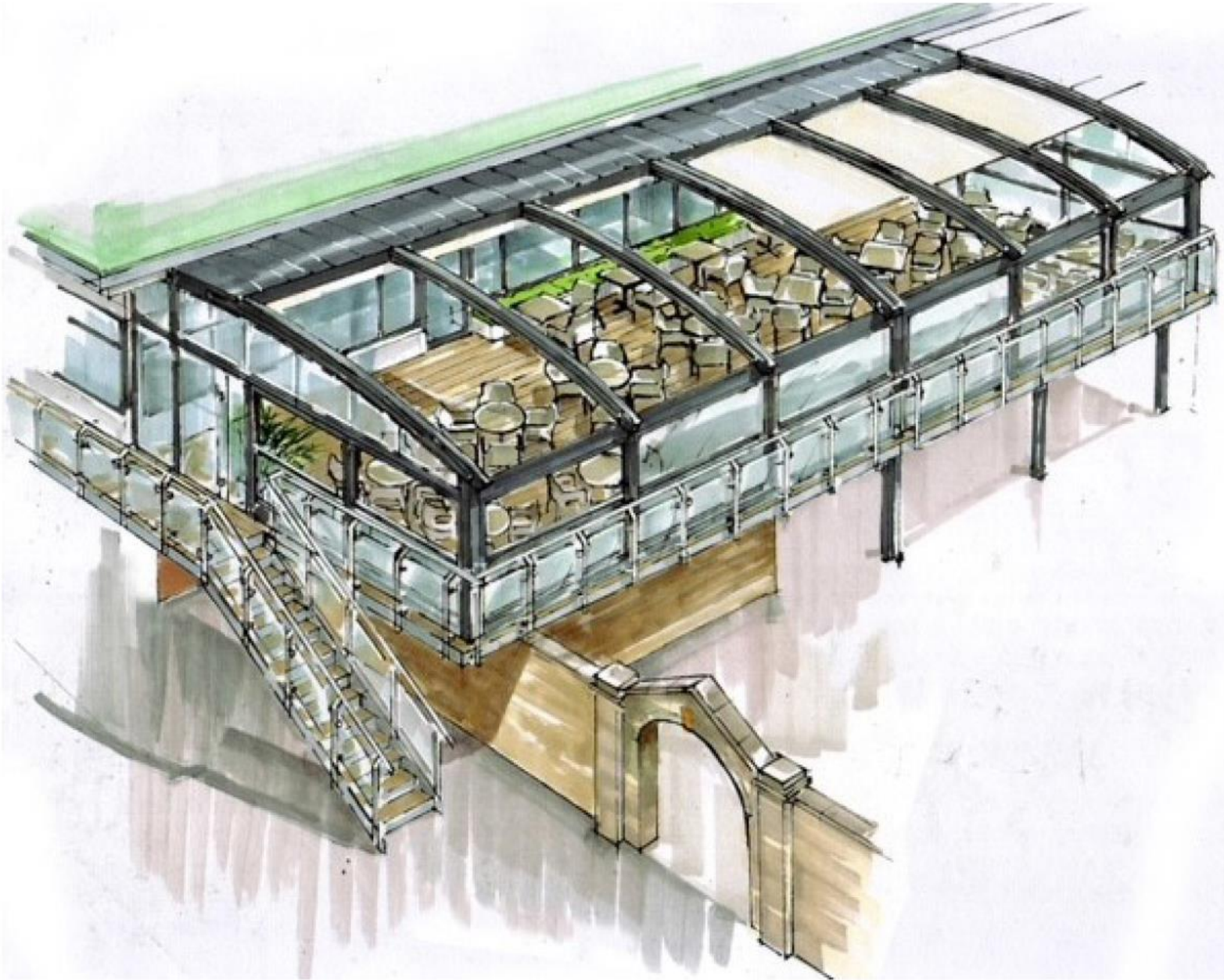
# Agenda

1. New designs of Member's Bar, Bar Terrace extension and function rooms refurbishment.
2. Update on Planning application for the proposed Indoor Golf Centre.
3. Update on first meeting of Padel/Pickleball Hub Working Group.



# Members Forum 10<sup>th</sup> September 2024

THE INITIAL VISION



## REFINING AND DEVELOPING THE VISION

**DesignLSM were tasked with transforming the bar and function rooms, enhancing the aesthetics, improving member experiences and solving operational challenges.**

The overarching ambition being to boost member engagement by creating inviting F&B destination spaces where members can unwind and enjoy.

**Making the club even better!**



## DESIGN NARRATIVE

# MOMENTS OF CALM, FOR A LIFETIME OF ENERGY.

Step into a sanctuary crafted to awaken the senses,  
elevating both the mind and body.

The design promises a dynamic blend of *soothing tones*, and materials that exude *calm* and *comfort*, and biophilic integration, seamlessly merging with the outdoors, fostering *social interactions* among guests while also encouraging moments of solitude and introspection.



## KEY PILLARS



**FLEXIBLE**



**COMFORTABLE**

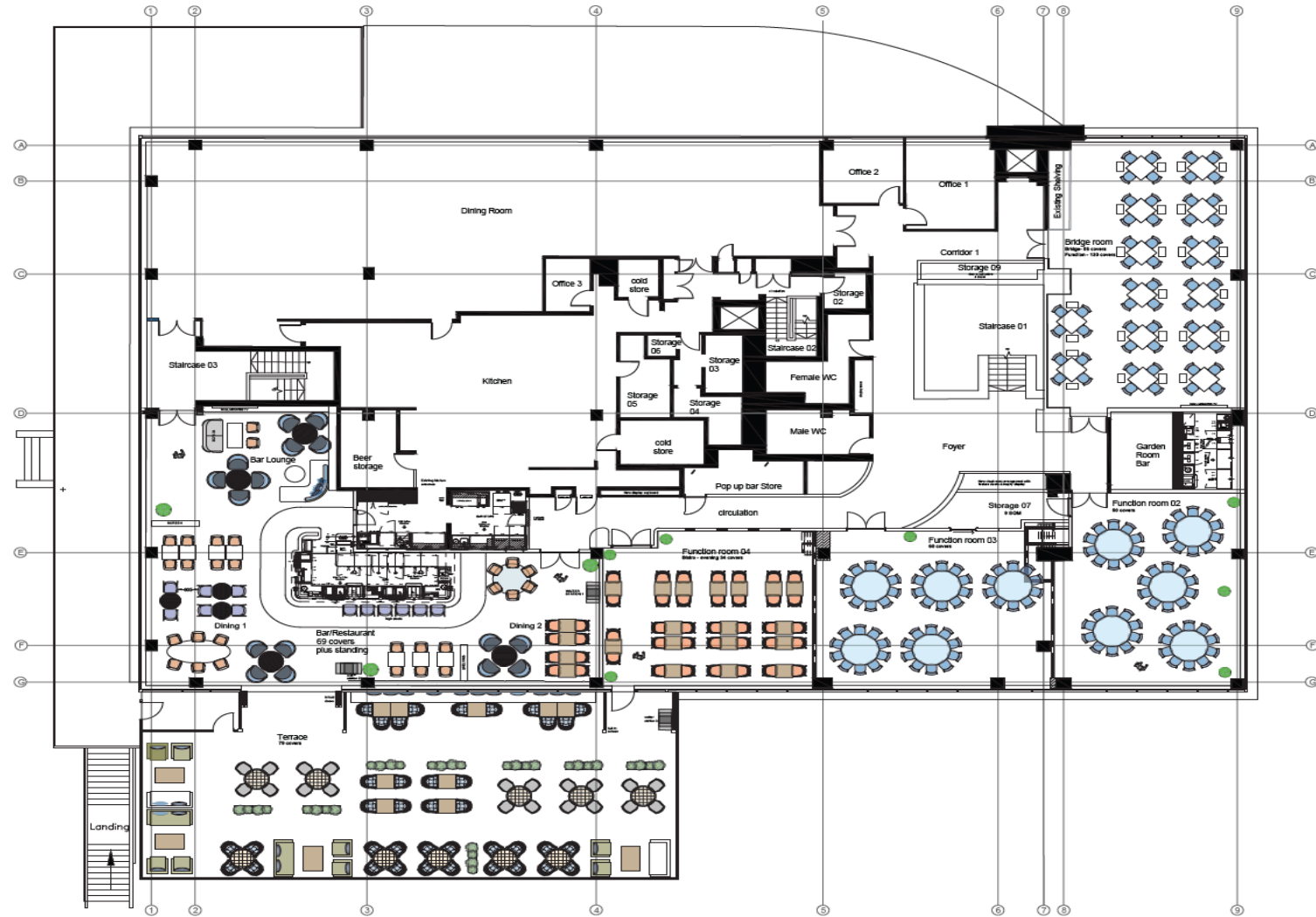


**SOCIALLY VIBRANT**



**UPLIFTING**

# GENERAL ARRANGEMENT PLAN



DESIGNLSM

Four Separate Function Rooms



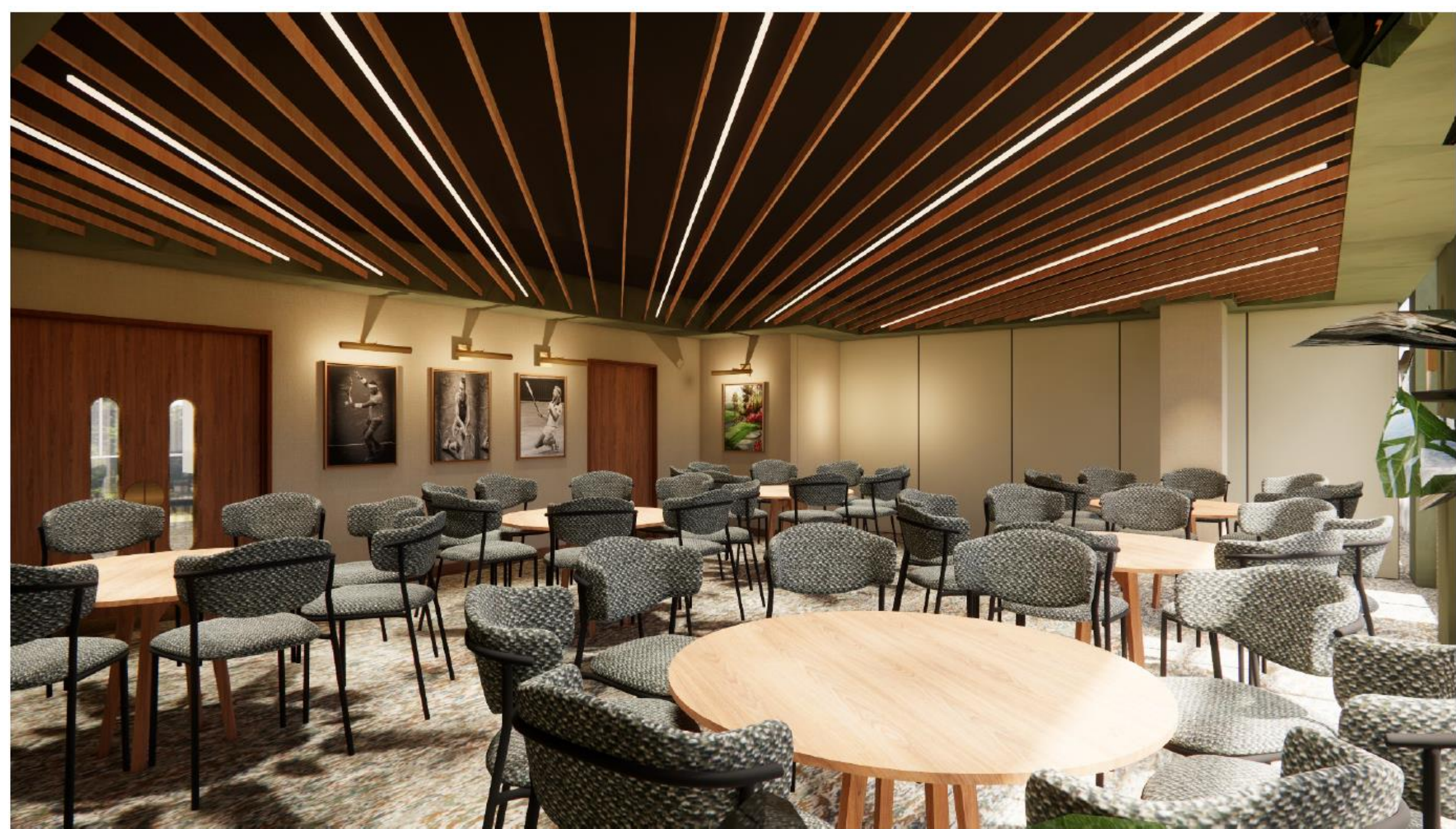














One Large Open Function Room

## KEY PILLARS



**FLEXIBLE**



**COMFORTABLE**



**SOCIALLY VIBRANT**



**UPLIFTING**







Different Areas of the Bar





## KEY PILLARS



**FLEXIBLE**



**COMFORTABLE**



**SOCIALLY VIBRANT**



**UPLIFTING**

# Update on Planning application for the proposed Indoor Golf Centre



FISHER TOMLIN & BOWYER

Roehampton Club

Roehampton Lane, London, SW15 5LR

Drawing Details

Title: Outline plan rev L | Reference: 123750 2 L

Scale: 1:500 @ A2 | Date: 3rd June 2024

78 Sydney Road, Wimbledon, London, SW20 8EP

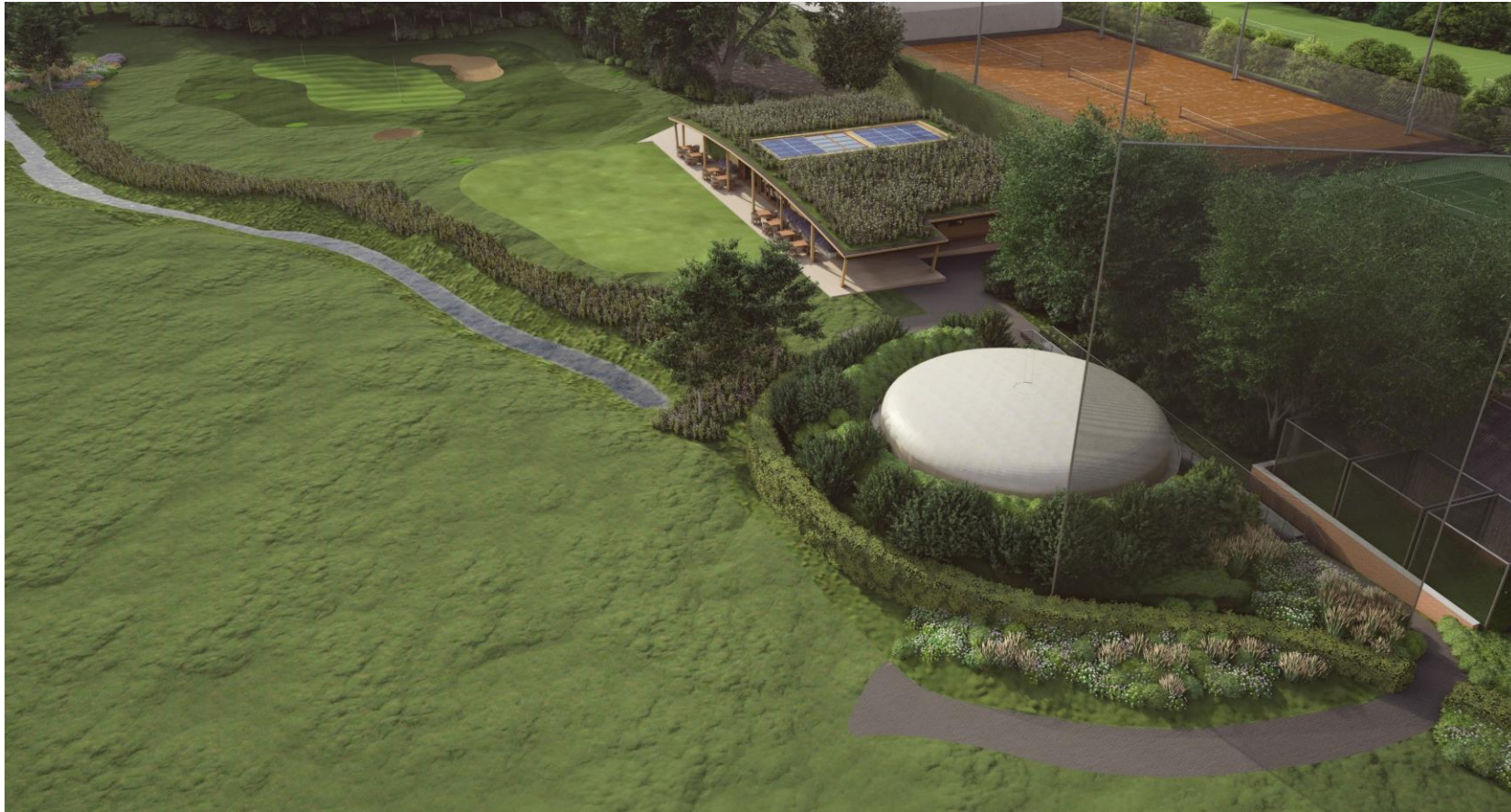
T +44 (0) 208 542 0423 | E info@fishertomlin.com | W fishertomlin.com

Copyright Fisher Tomlin & Bowyer Limited 2023

ALL DIMENSIONS MUST BE CHECKED ON SITE AND NOT SCALED FROM THIS DRAWING APART FROM THE PURPOSES OF PLANNING



# Indoor Golf Centre (IGC) Design





# Viewpoint 3



# Viewpoint 5



# Viewpoint 8



Scan for the minutes  
from the first  
meeting of  
Padel/Pickleball Hub  
Working Group:



**ROEHAMPTON CLUB -**  
**Revised Conceptual Draft**  
**Masterplan 2035 - Rev F**  
 scale NTS @ A3

