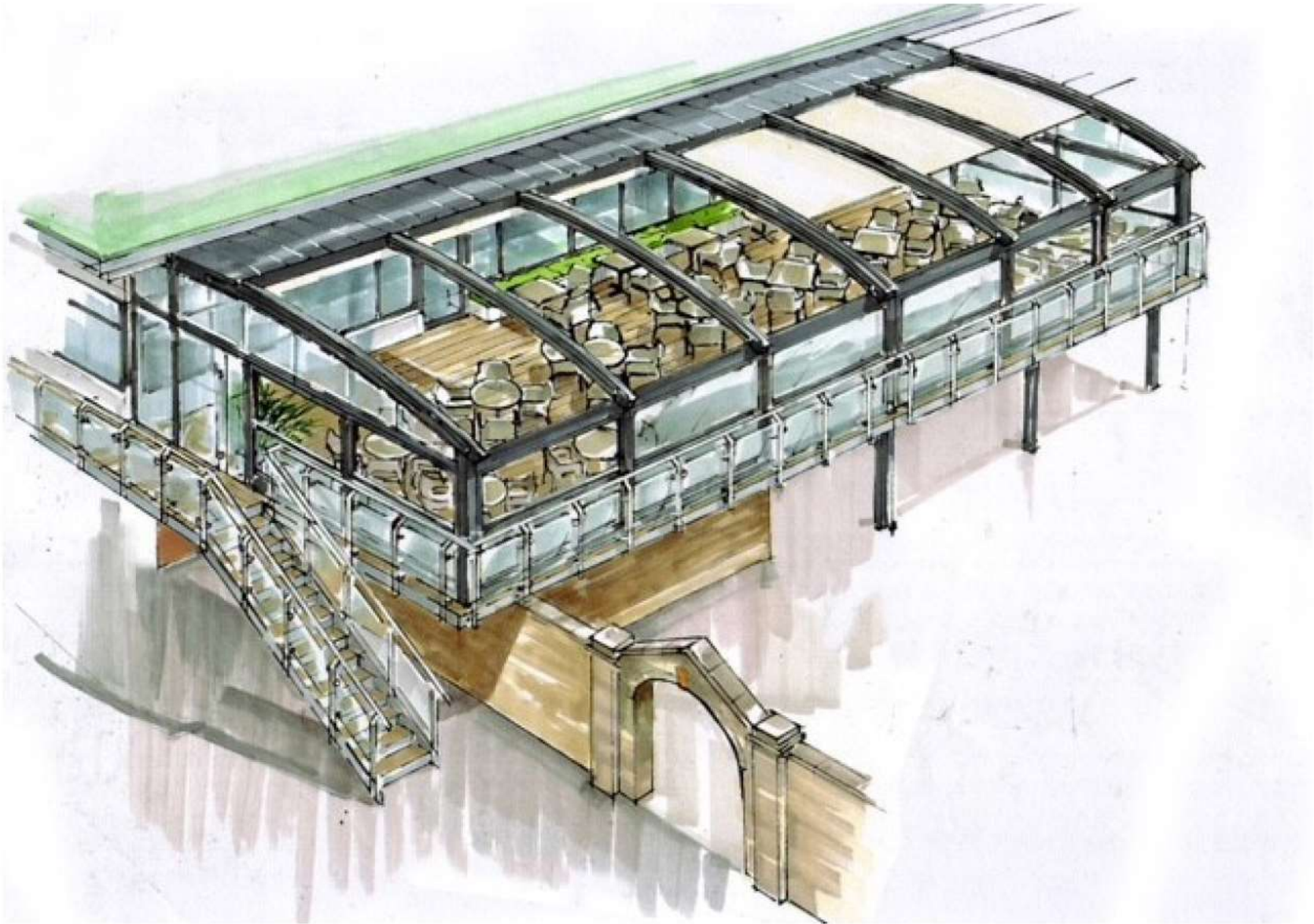


ROEHAMPTON CLUB
MEMBERS PRESENTATION
10.09.24

THE INITIAL VISION



REFINING AND DEVELOPING THE VISION

DesignLSM were tasked with transforming the bar and function rooms, enhancing the aesthetics, improving member experiences and solving operational challenges.

The overarching ambition being to boost member engagement by creating inviting F&B destination spaces where members can unwind and enjoy.

Making the club even better!



DESIGN NARRATIVE

MOMENTS OF CALM, FOR A LIFETIME OF ENERGY.

Step into a sanctuary crafted to awaken the senses,
elevating both the mind and body.

The design promises a dynamic blend of *soothing tones*, and materials that exude *calm* and *comfort*, and biophilic integration, seamlessly merging with the outdoors, fostering *social interactions* among guests while also encouraging moments of solitude and introspection.



KEY PILLARS



FLEXIBLE



COMFORTABLE

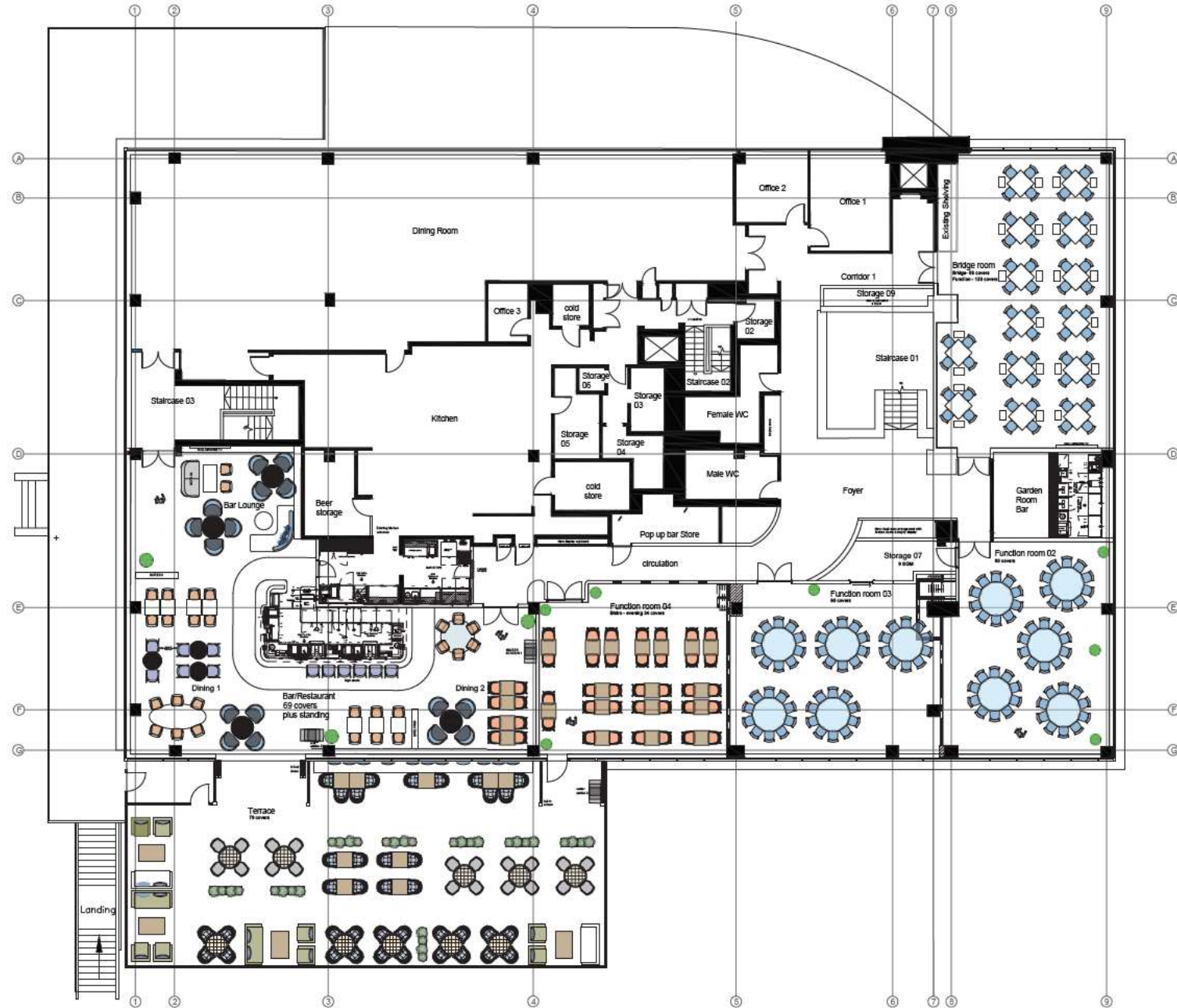


SOCIALLY VIBRANT



UPLIFTING

GENERAL ARRANGEMENT PLAN





Four Separate Function Rooms

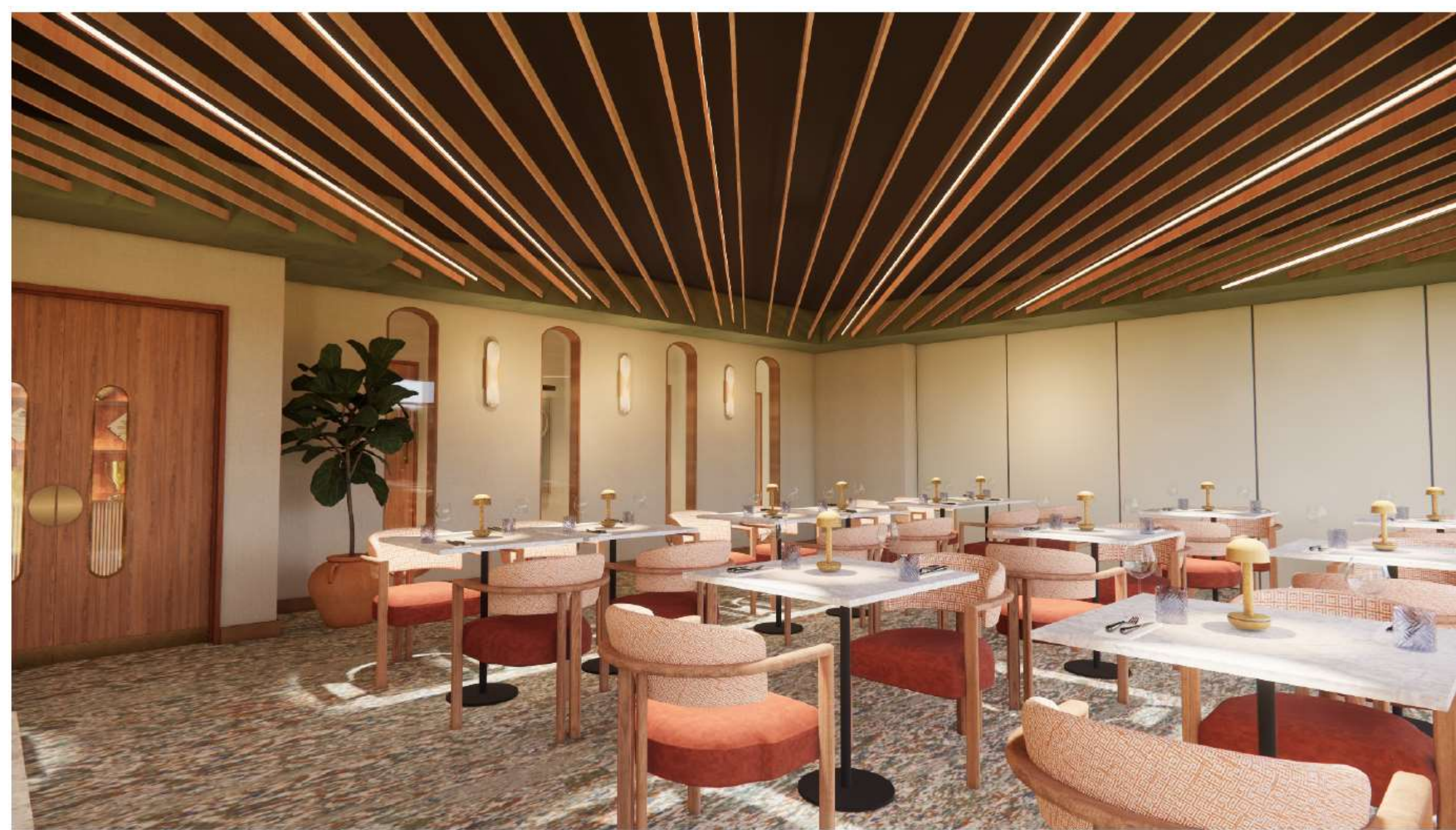








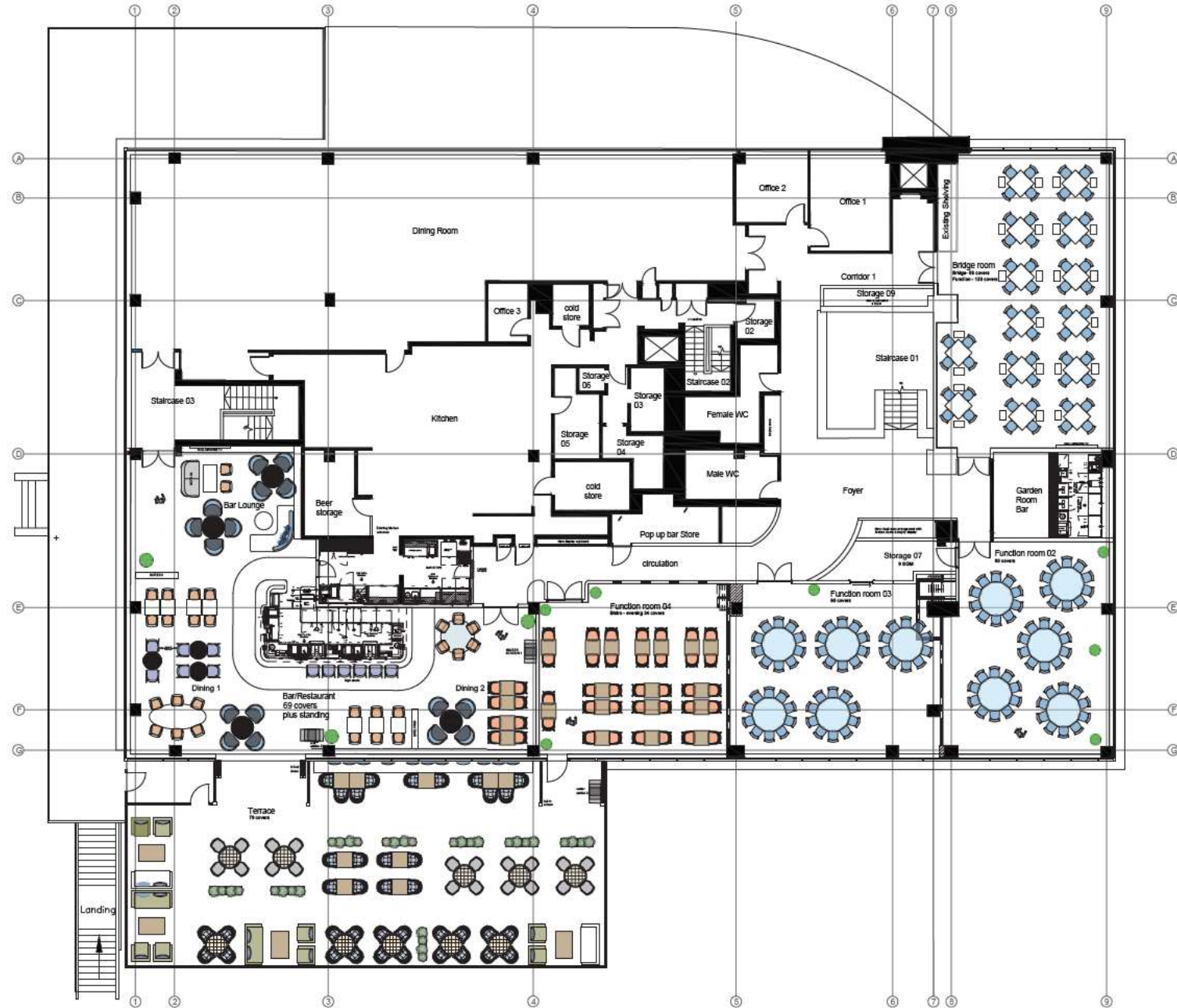






One Large Open Function Room

GENERAL ARRANGEMENT PLAN





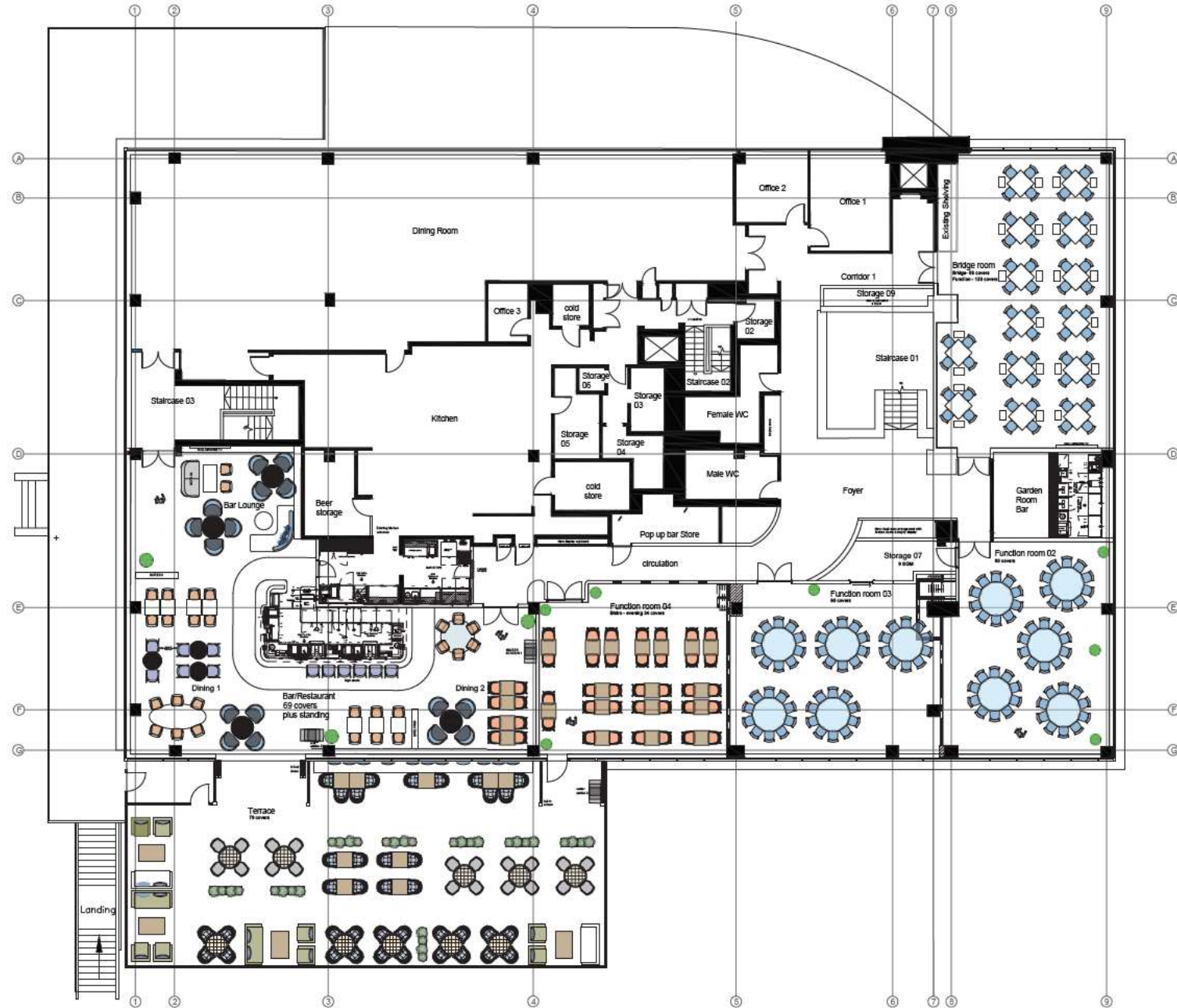


Different Areas of the Bar





GENERAL ARRANGEMENT PLAN



THANK YOU

CONTACT

Charlotte Gould, Designer

charlotte.g@designlsm.com

Holly Hallam, Managing Director

holly.h@designlsm.com

Office 05, Level 5, Tower Point,
44 North Road, Brighton, BN1 1YR

DESIGNLSM